

WISEUM UK PRESENTATION

AN INTERACTIVE PRESENTATION WITH MANY REFERENCES AND LINKS TO:

- FIELD INSTALLATIONS,
- PUBLIC BODY ENDORSEMENTS,
- VIDEO DEMONSTRATIONS,
- PRODUCT SOLUTION DATA SHEETS,
- NEXT BEST COMPARABLE TECHNOLOGIES.



Intelligent CCTV Solutions

Viseum UK

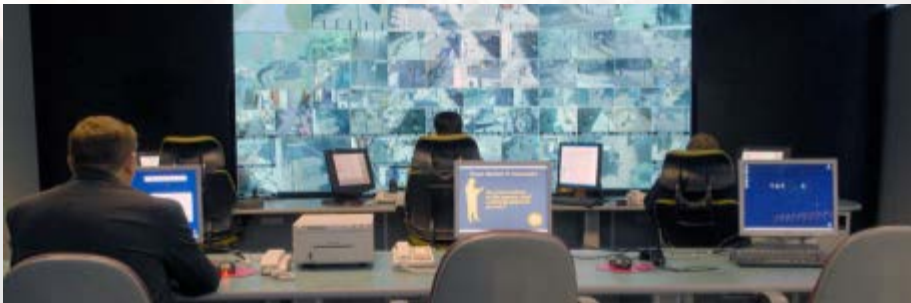
Innovators and Manufacturers of International CCTV Solutions



driven-by
Viseum[®]
Intelligent CCTV Specialists

What makes Viseum UK so different

- We do not just sell product. We sell internationally patented solutions to the problems with CCTV surveillance.
- We are the fastest growing CCTV technology business in the world. Primarily known for solving the problems with outdoor CCTV security systems, and making the client's entire security enterprise significantly more productive.
- Our solutions present the right amount of high quality CCTV video evidence to the right people at the right time, allowing them to:
 - React in the quickest and most effective way during the course of live emergencies and security threats, and
 - Clear up crime in the most efficient way during rapid investigations.



SOLUTIONS TO THE PROBLEM OF OPEN SPACE CCTV SURVEILLANCE

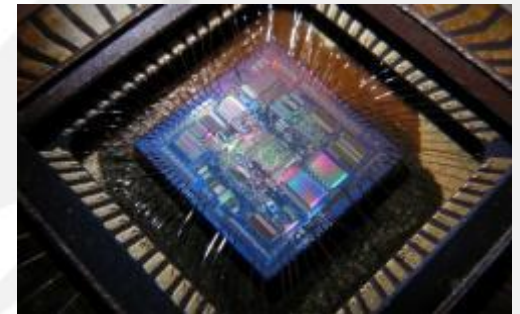
Viseum Intelligent Moving Camera (Viseum IMC)

Problem

- *Each client has different security issues with their open space environments, and each remote site layout has different surveillance requirements.*

Solution

- The Viseum IMC deals effectively with all these issues and requirements:
 - its software is modular enabling it to address all local security threats, and [> download presentation of our software capabilities <](#)
 - its hardware is modular enabling it to meet any site's surveillance requirements.



**The only PTZ Camera installations in the world to
automatically watch everything in all directions
at the same time**



[> click to go to YouTube video <](#)

Basic video demonstration

Next best technology – installation comparison

- A typical Viseum IMC camera installation uses around:
 - 10 Viseum IMC cameras protecting an area approximately 600m².
- For the same level of effective CCTV coverage with the next best camera solution, it would require:
 - 100 x 180 degree panoramic megapixel cameras,
 - 112TB more hard disk storage and
 - 645Mbps more video transmission bandwidth.



Other financial selling points

- The Viseum IMC camera does not suffer key operational dependencies on high bandwidth communications or 24/7 central control CCTV monitoring centres, because it is:

- Self-operated and
- Self-monitored, and
- Self-managed.



- A plug and play rapid installation for immediate vast coverage, as opposed to procuring, cabling and maintaining several separate inadequate camera installations.

Investment Highlights



- Installations are monitored locally with no operator fatigue or physical risk to their well-being e.g. in areas prone to disorder.

Independent endorsements



- Viseum cameras are proven to clear up 15 times more incidents than any other camera.
- It has been independently endorsed that; to provide the level of CCTV security that each Viseum IMC provides without being dependent on any security surveillance operators, or CCTV monitoring infrastructures, it would take:
 - at least 5 – 6 times more installations of any other advanced outdoor pan, tilt, zoom or “PTZ camera” solution, or
 - at least 10 of the industry’s latest panoramic megapixel cameras, or
 - at least 200 times more standard fixed camera installations.



[> download manufacturer's comparison chart <](#)

driven-by
Viseum[®]
Intelligent CCTV Specialists

SOLUTIONS TO THE PROBLEM WITH CENTRAL CONTROL CCTV SYSTEMS

Central control performance, training and support



Problem

- *Compatibility and in-life issues between the many different software systems used in a central control CCTV system, need cross company collaboration to resolve.*
- *Technical training and support for security staff needs to be provided separately by each system vendor.*

Solution

- Viseum UK delivers the world's only all-in-one CCTV security management software system, which includes Viseum's Virtual Operator CCTV Monitoring VCA Software, an intuitive video management system, virtual matrix and DVR/NVR.
- The Viseum solution is an advanced feature rich software platform designed to harmonise all processes and hardware security assets in a CCTV security enterprise.



Viseum Integrated CCTV Security Management System



- **Viseum SMS**

- Virtual Operator CCTV Monitoring VCA Software.
- Crime Reduction Management system (Viseum CRM).
- Mobile client workstation CCTV monitoring software.
- NVR/DVR.
- Virtual matrix.

- **Some advanced software modules**

- Busy high street surveillance and crowd control – for the best situation awareness.
- Tag and track – follow and identify everyone. [> see demonstration <](#)
- Face recognition - the world's greatest security weapon against crime and terrorism. [> see technical performance and reliability <](#)
- Videosweeper advanced “smart search”. – find crucial evidence in seconds.



Central Control CCTV Security Management System



[> click to go to YouTube video <](#)

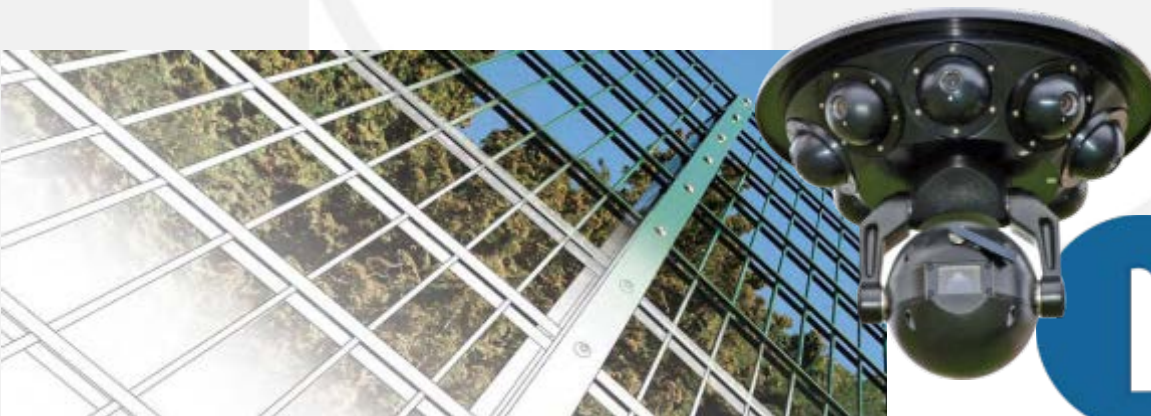
[> download system datasheet <](#)

Video demonstration



Perimeter Intrusion Detection Systems (PIDS)

- The Viseum IMC captures close-up forensic video evidence of incidents in large open space as standard, no matter:
 - where the site gets broken into, or where the intruders circulate to or leave,
 - where the theft or criminal damage takes place,
 - even if the suspect is wearing a hood or mask to cover their face; a positive ID can still be made.
- On the rare occasion other CCTV systems achieve this it makes headline news.



[> download example Installation <](#)

driven-by
Viseum[®]
Intelligent CCTV Specialists

Return on investment (ROI) example

- Viseum UK CCTV solutions produce the highest ROI available for CCTV security equipment. For example, compared with conventional CCTV scheme design a Viseum UK CCTV system:
 - Produces at least 6 times the value
(in fact Viseum UK end users endorse at least 10 times more value).
 - Is 3 times more expensive
(in fact typical complete projects cost less than 1.5 times),
- Even on this conservative basis a Viseum UK solution more than halves the cost of ownership and produces over double the return on investment.



References

**“CCTV is the worlds greatest weapon
against crime and terrorism”**

- **New Scotland Yard**

Viseum UK also helped design and commission the communications for the overt CCTV service for this police force.

[> download latest report <](#)

- **London 2012 major public event**

- Viseum UK products meet quality compliance as used to protect the construction of this event.
- Viseum UK also sponsored the 2012 Olympics CCTV security for London's River Thames Olympic Torch Relay.

[> watch YouTube video <](#)



driven-by
Viseum[®]
Intelligent CCTV Specialists

Legacy systems integration

- Viseum IMC cameras integrate seamlessly plug-and-play with all analogue systems.
- Any one of our software modules adds significant value to an existing legacy system.
- We have a fast and efficient digital integration programme for our technology partners:
 - Our software modules' APIs are based around the ONVIF platform of secure web based protocols.
 - It typically takes one Viseum Technology Partner's engineer one week to integrate to the advanced level.

Technology Partner example - James Condron VP CNL Sales *"we have a good working relationship with Viseum UK"*.



SOLUTIONS TO THE PROBLEMS WITH MAJOR PROJECT DELIVERY



Viseum UK major projects delivery system



Problem

- *Each working from their own information; the suppliers, installers, designers and planners of a major security project can waste between 35% - 65% of their time validating and verifying project information.*
- *This results in up to 75% of projects being completed behind schedule and typically 60% completed over budget.*

Solution

- Viseum UK delivers major security projects using the world's only single-source global asset management system. This is a trusted and secure live online software system incorporating processes to solve all of these problems.
- This software system is synchronised to the entire project supply chain's proprietary systems to schedule project deliverables, manage equipment assets and control any project design change.
 - This delivery system can save a minimum of 35% operational expenditure and increase project performance by at least 20%.



Viseum UK support infrastructure

[> click image to go to YouTube video <](#)

- **Project delivery**

- Project management team used for delivering the CCTV security for London's 2012 major public event.
 - Resulting delivery system achieves client's agreed deployment schedule.
- 1 main manufacturing facility and 3 overflow factories located around London.



video of Viseum UK's main manufacturing facility

- **Software development**

- The largest PhD development network for CCTV surveillance Video Content Analysis (VCA) software technology.
- 2 software development laboratories with 10 software engineers in each.

- **Full in-life support**

- Viseum UK's remote managed support service constantly operational supplying instant remote support and training.

END

Q

